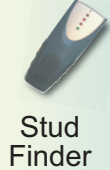


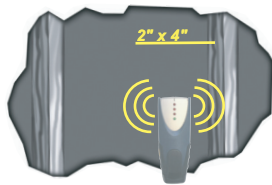
# K1-F-S / K1-F-B Installation

## Tools Needed



## Wood Stud Wall

### 1 Locate a Wall Stud



To avoid property damage or injury, attach the TV wall mount to a wood stud.

### 2 Drill Mounting Holes

- Position the wall piece so that the holes align with the middle of a stud.
- Mark the wall at each of the hole positions.
- Drill holes with 1/16" drill bit, 2" deep and go to step 3.



## Concrete Wall

### 1 2 Purchase and Install Anchors

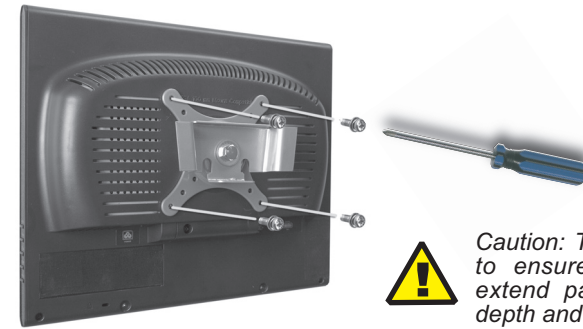
Purchase concrete anchors and screws that support the weight of your screen and mount. Install them according to the manufacturer's instructions.

### 3 Anchor Plate to the Wall



### 4 Attach Bracket to the Screen

If the screws that came with your screen hold the bracket securely, use them, otherwise use the provided screws.



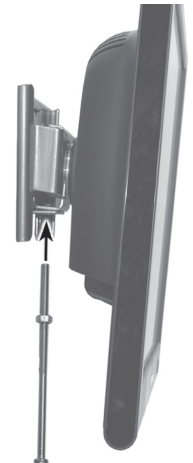
*Caution: Test the screw length to ensure that they do not extend past the screen hole depth and damage the screen.*

### 5 Hang the Screen



*Caution: Using this mount with screens heavier than the maximum load weight (50 lbs.) may result in instability and cause injury.*

### 6 Install the Security Screw



© 2007 K2Mounts. All rights reserved.